

ADDENDUM NO. 2

TO
THE CONTRACT DOCUMENTS
PECK SINK PRESERVE IMPROVEMENT PLANS PROJECT
IN

HERNANDO COUNTY, FLORIDA

SOLICITATION NO. 11-0037

NOTICE

BIDDERS ARE REQUIRED TO ACKNOWLEDGE RECEIPT OF
THIS ADDENDUM BY SIGNATURE AT THE BOTTOM OF
THIS ADDENDUM IN THE SPACES PROVIDED AND
RETURNED AT THE TIME OF THE BID DATE.

To All Bidders:

This Addendum forms a part of the Contract Documents and modifies the Bidding Documents dated April 2011 with amendments and additions noted below. Acknowledge receipt of this Addendum in the space provided in the Bid Form. Failure to do so may disqualify the Bidder.

Changes or Clarifications to the Project Bid Specifications:

1. Aerial exhibit that was displayed in the pre-bid meeting is attached in a file for your reference. This exhibit is for informational purposes only and is not part of the construction plans.
2. The pond liner should be a double-sided textured 40 mil HDPE Liner as specified in the Scope and Plans. Please see a revised table for Specification Section 02700, High Density Polyethylene Geomembrane Liner, 2.01, Table 1 Minimum Values for Textured HDPE.
3. The specification must be followed for the High Density Polyethylene Geomembrane Liner, 3.02.A.1 which states that the Installer shall design the anchor system and have it signed and sealed by a Florida registered Professional Engineer.

Table 1: Minimum Values for Textured HDPE Geomembranes

Thickness, (minimum average) mil (mm) Lowest individual reading (-10%)	ASTM D 5994	every roll	30 (0.75) 27 (0.69)	40 (1.00) 36 (0.91)	60 (1.50) 54 (1.40)	80 (2.00) 72 (1.80)	100 (2.50) 90 (2.30)
Density, g/cm ³	ASTM D 1505	200,000 lb	0.94	0.94	0.94	0.94	0.94
Tensile Properties (each direction) Strength at Break, lb/in-width (N/mm) Strength at Yield, lb/in-width (N/mm) Elongation at Break, % Elongation at Yield, %	ASTM D 6693, Type IV Dumbbell, 2 ipm G.L. 2.0 in (51 mm) G.L. 1.3 in (33 mm)	20,000 lb	66 (11) 68 (11) 100 12	75 (13) 90 (15) 100 12	115 (20) 132 (23) 100 12	155 (27) 177 (31) 100 12	230 (40) 225 (39) 100 12
Tear Resistance, lb (N)	ASTM D 1004	45,000 lb	24 (106)	32 (142)	45 (200)	60 (266)	75 (333)
Puncture Resistance, lb (N)	ASTM D 4833	45,000 lb	65 (289)	95 (422)	130 (578)	160 (711)	190 (845)
Carbon Black Content, % (Range)	ASTM D 1 603*/421 8	20,000 lb	2.0 - 3.0	2.0 - 3.0	2.0 - 3.0	2.0 - 3.0	2.0 - 3.0
Carbon Black Dispersion	ASTM D 5596	45,000 lb	Note ⁽¹⁾	Note ⁽¹⁾	Note ⁽¹⁾	Note ⁽¹⁾	Note ⁽¹⁾
Asperity Height, mil (mm)	ASTM D 7466	second roll	16 (0.40)	18 (0.45)	18 (0.45)	18 (0.45)	18 (0.45)
Notched Constant Tensile Load ⁽²⁾ , hr	ASTM D 5397, Appendix	200,000 lb	1000	1000	1000	1000	1000
Oxidative Induction Time, min	ASTM D 3895, 200° C; O ₂	200,000 lb	>140	>140	>140	>140	>140
TYPICAL ROLL DIMENSIONS							
Roll Length ⁽³⁾ , ft (m)	Double-Sided Textured		830 (253)	700 (213)	520 (158)	400 (122)	330 (101)
	Single-Sided Textured		840 (256)	650 (198)	420 (128)	320 (98)	250 (76)
Roll Width ⁽³⁾ , ft (m)			22.5 (6.9)	22.5 (6.9)	22.5 (6.9)	22.5 (6.9)	22.5 (6.9)
Roll Area, ft ² (m ²)	Double-Sided Textured		18,675 (1,735)	15,750 (1,463)	11,700 (1,087)	9,000 (836)	7,425 (690)
	Single-Sided Textured		18,900	14,625	9,450	7,200	5,625

NOTES:

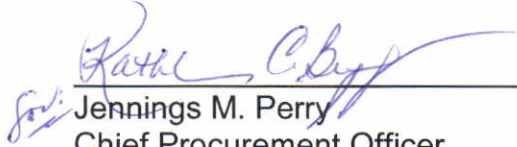
- ⁽¹⁾Dispersion only applies to near spherical agglomerates. 9 of 10 views shall be Category 1 or 2. No more than 1 view from Category 3.
- ⁽²⁾NCTL for GSE I-ID Textured is conducted on representative smooth membrane samples.
- ⁽³⁾Roll lengths and widths have a tolerance of ± 1%.
- GSE I-ID Textured Double-Sided is available in rolls weighing approximately 4,000 lb (1,800 kg) and Single-Sided weighing approximately 3,000 lb (1,360 kg).
- All GSE geomembranes have dimensional stability of ±2% when tested according to ASTM D 1204 and LTB of <-77° C when tested according to ASTM D 746.
- *Modified.

ACKNOWLEDGMENT

By: _____
Vendor Authorized Signature

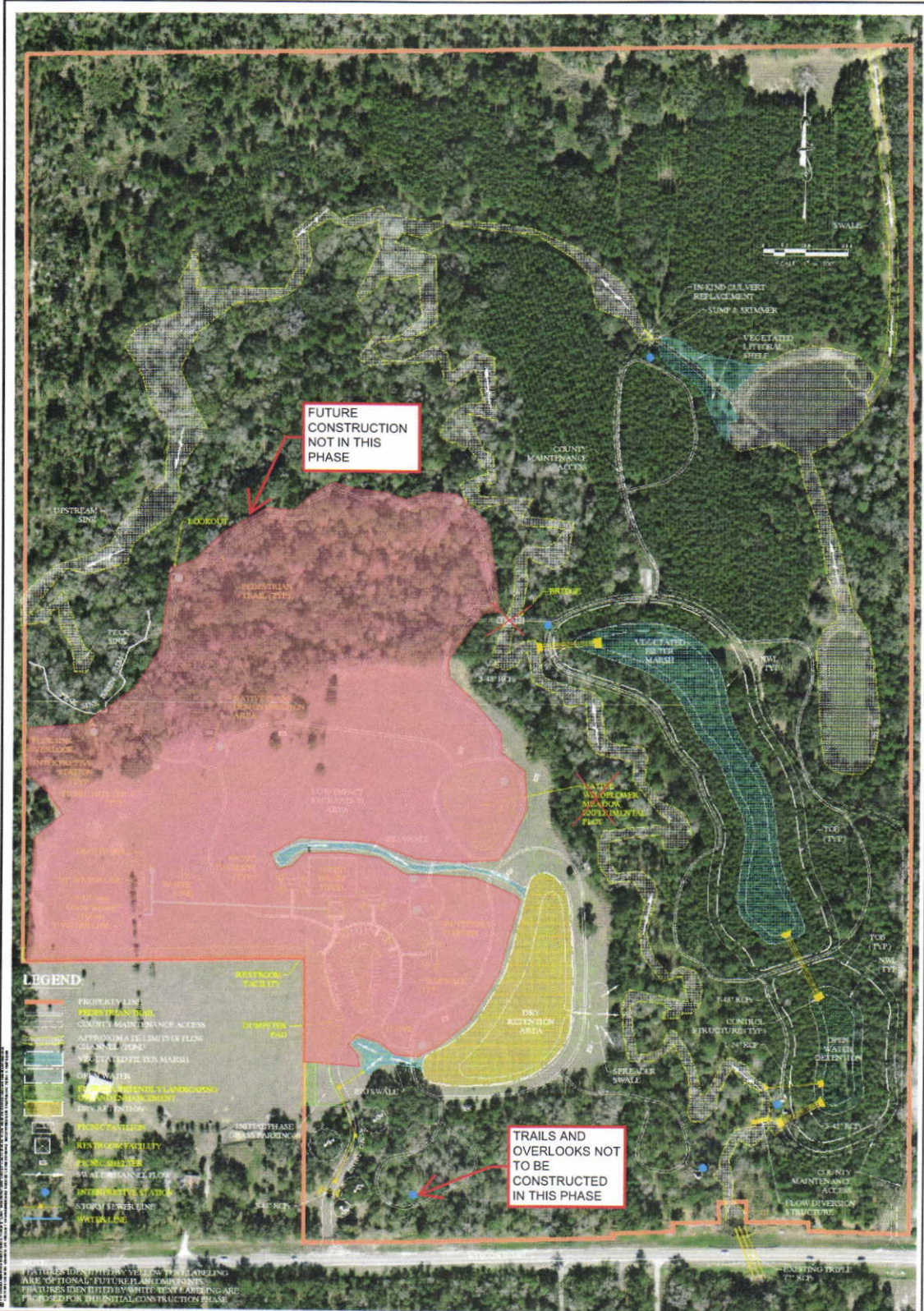
Printed Name & Title

Vendor Company Name



Jennings M. Perry
Chief Procurement Officer

Issued: 4/27/2011



King
ENGINEERING ASSOCIATES, INC.

4921 Memorial Highway
One Memorial Center, Suite 300
Tampa, Florida 33634
Phone 813 880-8881
Fax 813 880-8882
www.kingengineering.com
Engineering License #2610

**PECK SINK PRESERVE
CONCEPTUAL MASTER PLAN**

