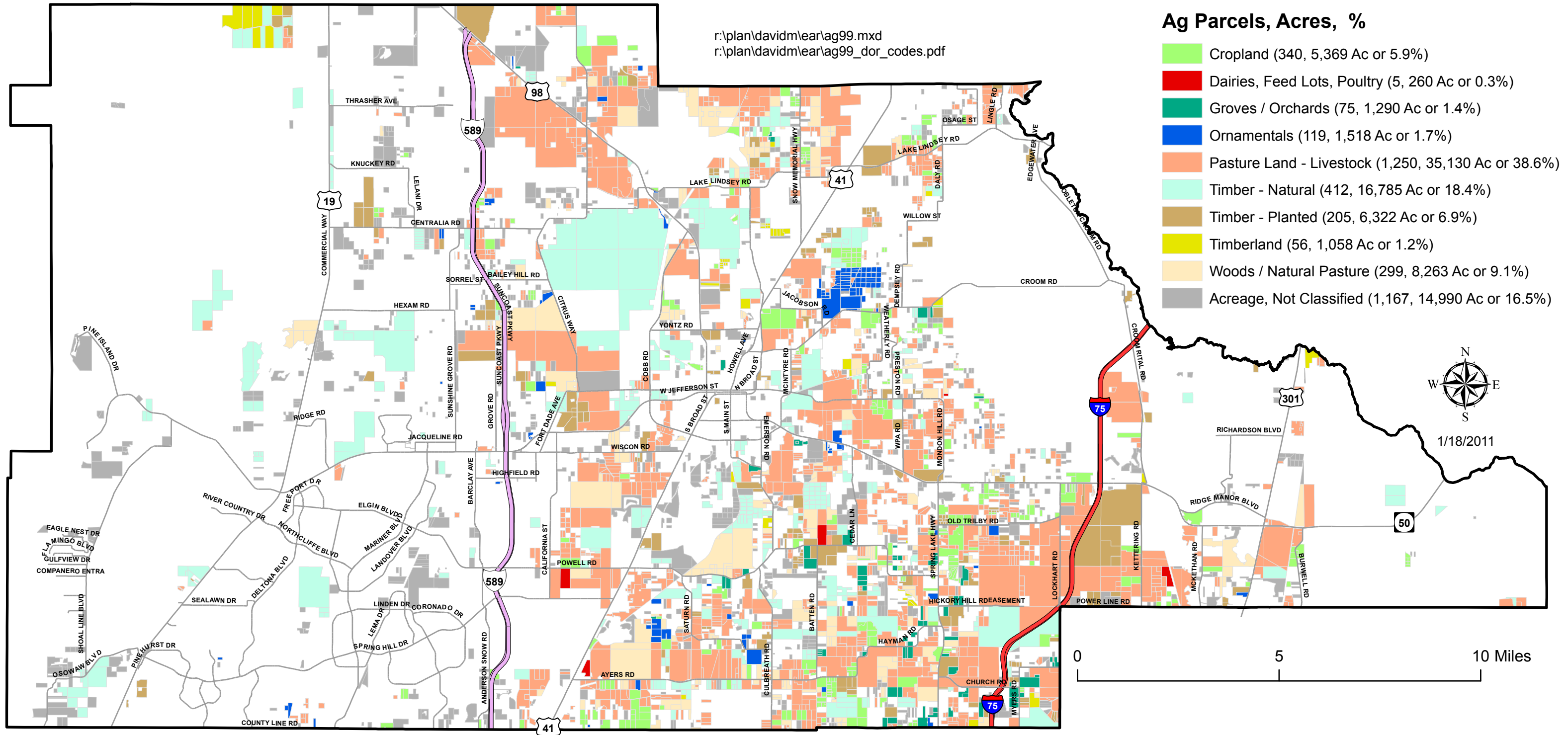


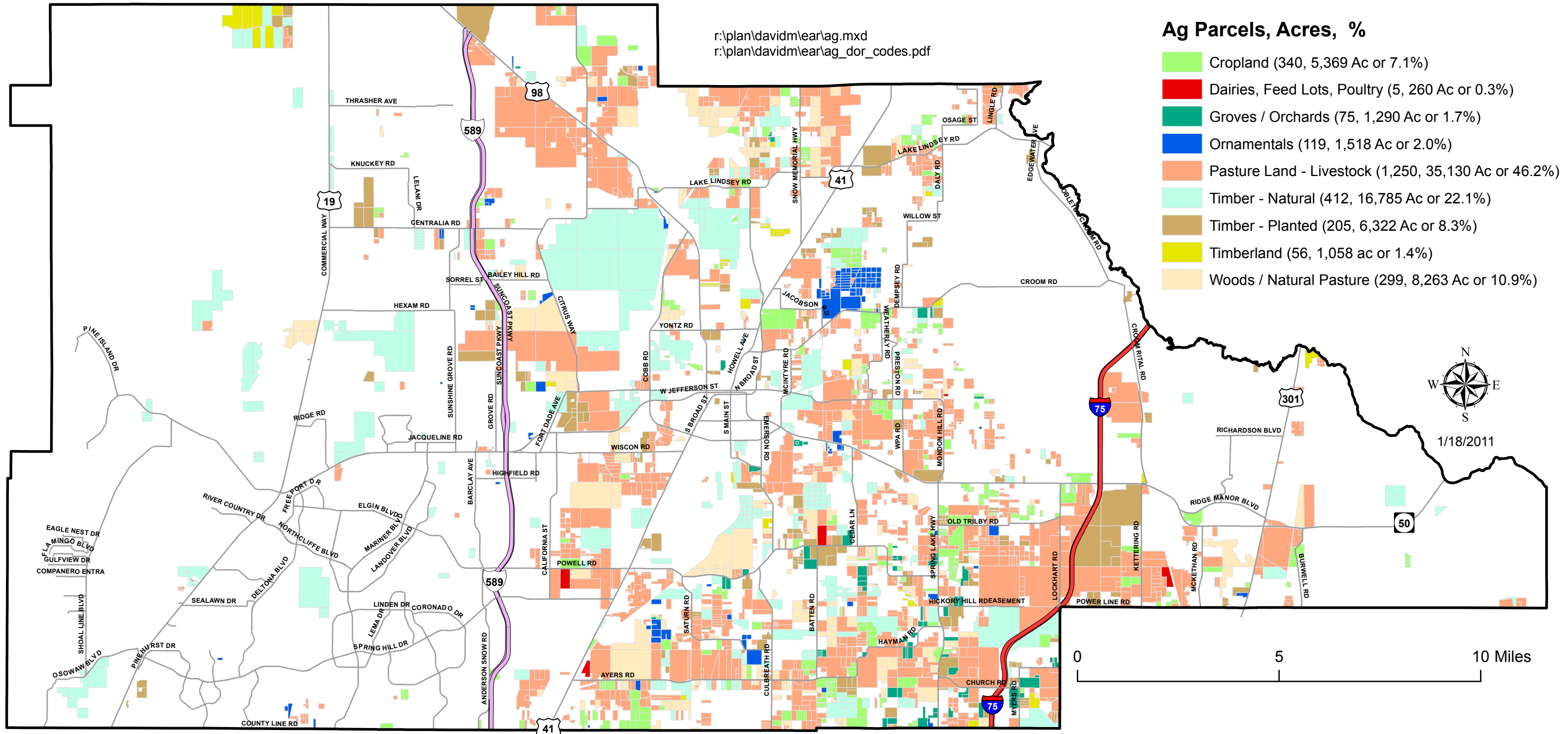
# Agricultural & Unclassified Lands\* of Hernando County, Florida (90,985 Acres or 28.1%)



\* As defined by the Florida Department of Revenue (DOR)

Source: Hernando County Property Appraiser - Central GIS - GIS.V\_PARCELS

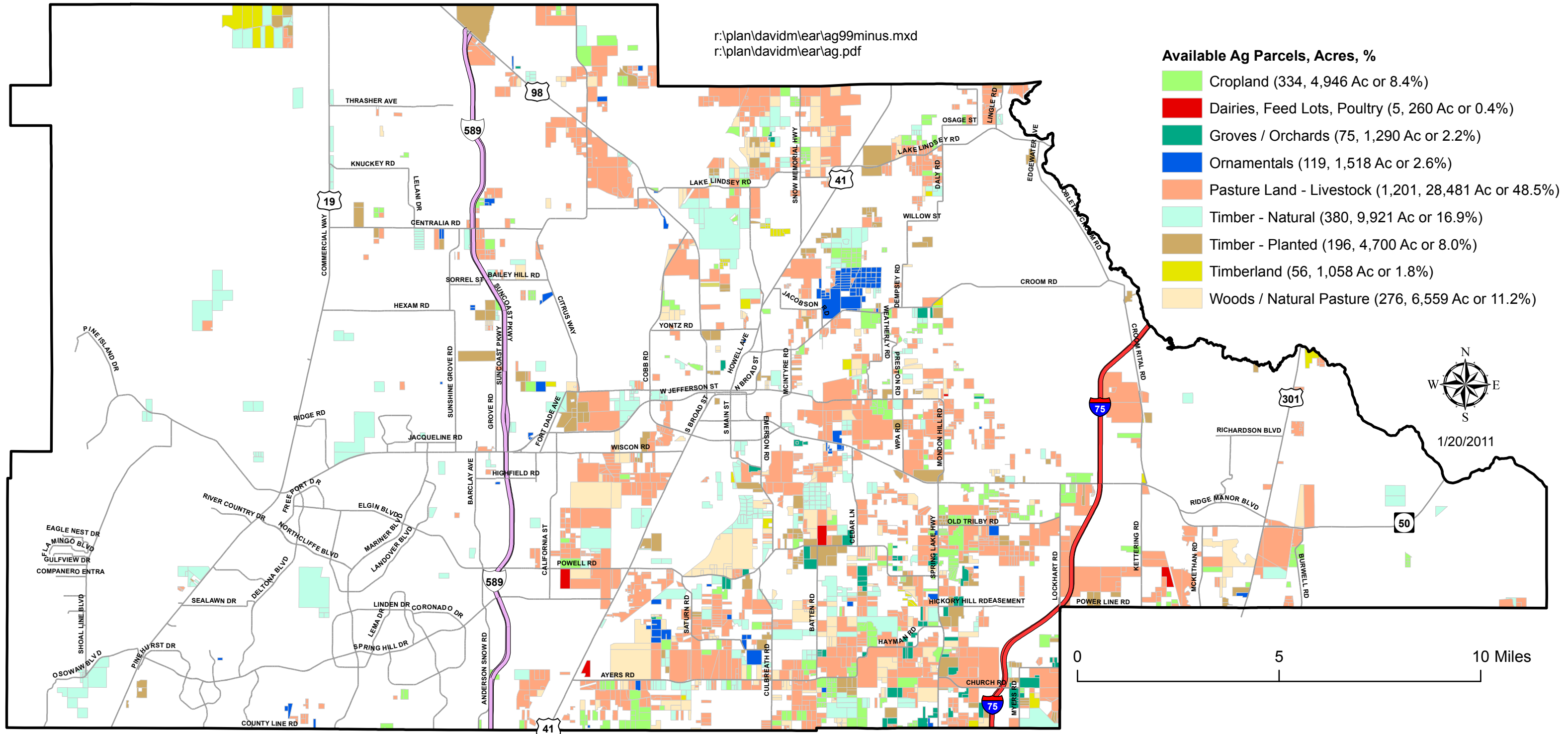
# Agricultural Lands\* of Hernando County, Florida (75,995 Acres or 23.5%)



\* As defined by the Florida Department of Revenue (DOR)

Source: Hernando County Property Appraiser - Central GIS - GIS.V\_PARCELS

# Lands Available\* for Agriculture - Hernando County, Florida (58,733 Acres or 18.1%)



\* As defined by the Florida Department of Revenue (DOR) & County Planning Department

Source: Hernando County Property Appraiser - Central GIS - GIS.V\_PARCELS