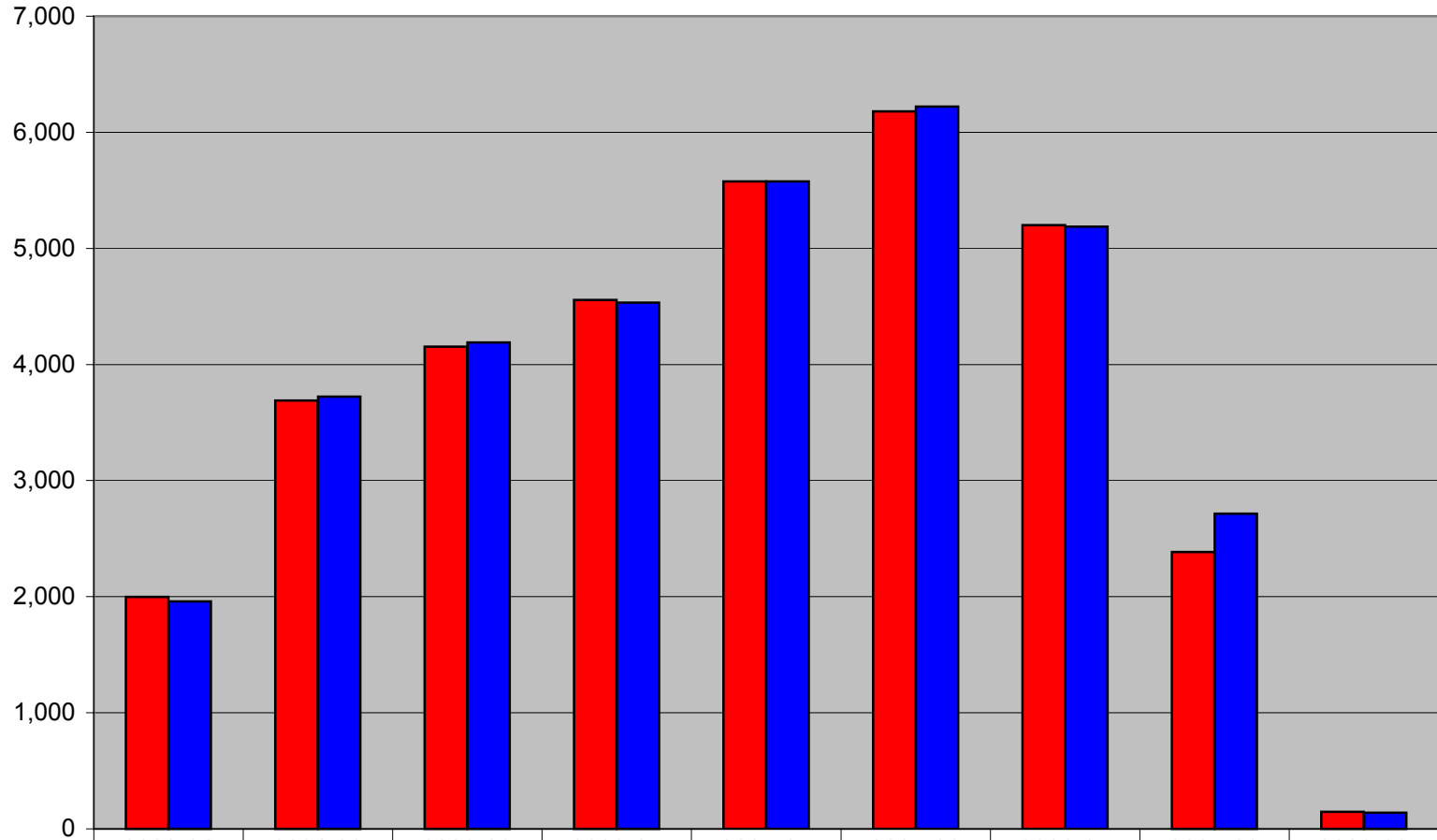


Annual Population Change: 2000-2009
Hernando County, Florida
Source: Bureau of Economic & Business Research (BEBR)



	2000-01	2001-02	2002-03	2003-04	2004-05	2005-06	2006-07	2007-08	2008-09
Unincorporated Change	1,997	3,689	4,153	4,555	5,577	6,179	5,200	2,384	148
Hernando County Change	1,960	3,722	4,190	4,533	5,577	6,222	5,187	2,715	140

■ Unincorporated Change ■ Hernando County Change